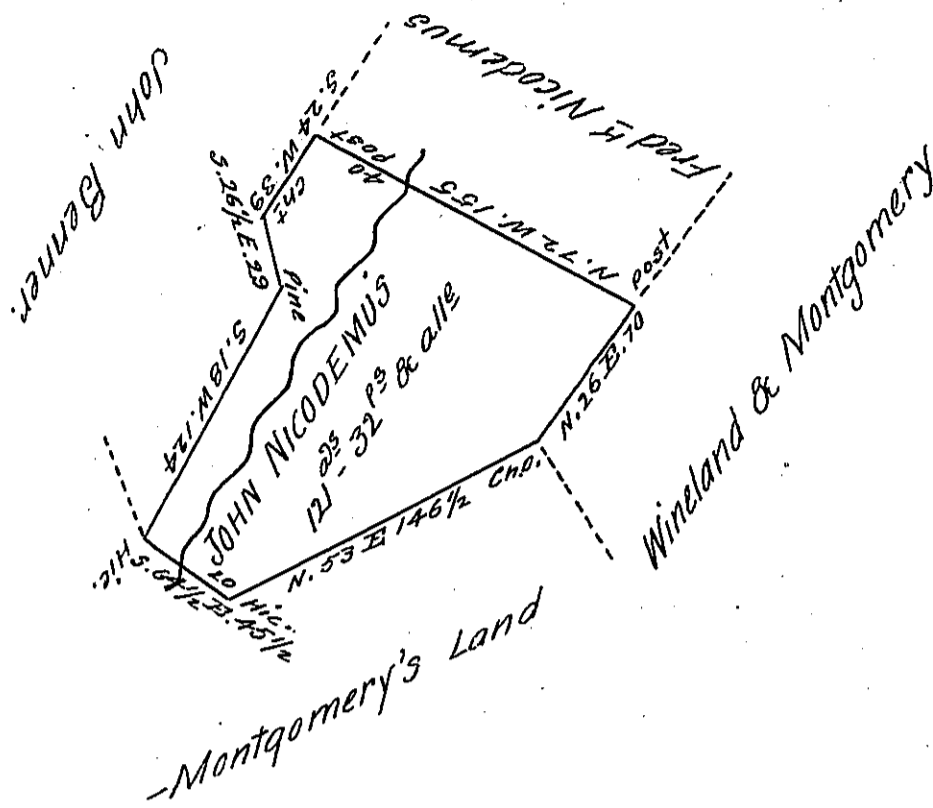


FORM No. 1.



Situate on the Waters of Clover Creek in Woodberry Town-  
 -ship Bedford County Containing 121<sup>as</sup> 32 P's & the usual allowance  
 of Six P-Cent for Roads &c. Surveyed for John Nicodemus the 2<sup>nd</sup>  
 day of September 1823 on Warrant for 100<sup>as</sup> dated the 4<sup>th</sup> day of  
 March 1823.

John Wolf, D. S.

To Samuel Cochran, Esq.  
 Surveyor General.

IN TESTIMONY that the above is a copy of the original remaining on file in  
 the Department of Internal Affairs of Pennsylvania, made  
 conformably to an Act of Assembly approved the 16th day of  
 February, 1833, I have hereunto set my Hand and caused  
 the Seal of said Department to be affixed at Harrisburg,  
 this nineteenth day of April 1906

*Geo. P. Brown*  
 Secretary of Internal Affairs.